

# Harkins

POPCORN

For Popcorn Lovers By Popcorn Lovers.

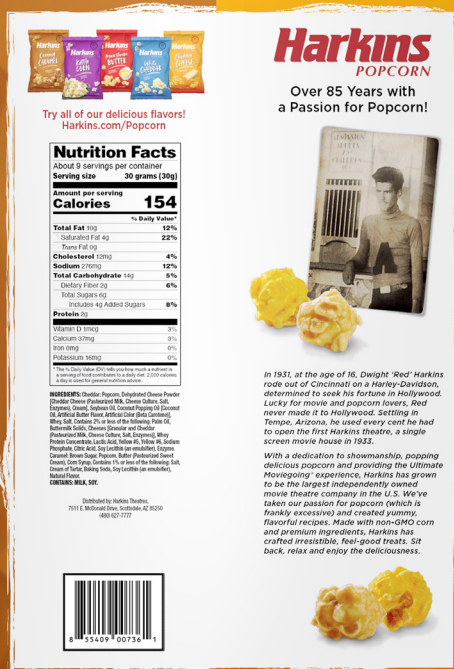


The Perfect Balance  
of Caramel & Cheddar

HARKINS.COM/POPCORN

# THE MIX!

## CHEDDAR & CARAMEL



**MADE FROM WHOLE GRAIN, AMERICAN-GROWN  
POPPING CORN WITH NON-GMO CORN KERNELS.**  
NO PRESERVATIVES OR HIGH FRUCTOSE CORN  
SYRUP. INGREDIENTS DO NOT CONTAIN GLUTEN.

<b>COMPANY NAME:</b>	REEL DEALS, LLC
<b>BRAND NAME:</b>	HARKINS POPCORN
<b>PRODUCT DESCRIPTION:</b>	MIX CHEDDAR & CARAMEL POPCORN
<b>GTIN:</b>	855409007361
<b>GTIN-12:</b>	855409007361
<b>BARCODE:</b>	855409007361
<b>PRODUCT DIMENSIONS:</b>	H: 13.75 in W: 9 in D: 4 in
<b>PRODUCT WEIGHT:</b>	9.5 oz
<b>CASE DIMENSIONS:</b>	H: 12.25 in W: 22 in D: 12 in
<b>CASE WEIGHT:</b>	7.50 lbs
<b>CASE CUBE:</b>	1.91 ft <sup>3</sup>
<b>CASE PACK:</b>	9 count
<b>PALLET PATTERN:</b>	6 x 6 = 36

**INGREDIENTS:** Cheddar: Popcorn, Dehydrated Cheese Powder [Cheddar Cheese (Pasteurized Milk, Cheese Culture, Salt, Enzymes), Cream], Soybean Oil, Coconut Popping Oil [Coconut Oil, Artificial Butter Flavor, Artificial Color (Beta Carotene)], Whey, Salt, Contains 2% or less of the following: Palm Oil, Buttermilk Solids, Cheeses [Granular and Cheddar (Pasteurized Milk, Cheese Culture, Salt, Enzymes)], Whey Protein Concentrate, Lactic Acid, Yellow #5, Yellow #6, Sodium Phosphate, Citric Acid, Soy Lecithin (an emulsifier), Enzyme. Caramel: Brown Sugar, Popcorn, Butter (Pasteurized Sweet Cream), Corn Syrup, Contains 1% or less of the following: Salt, Cream of Tartar, Baking Soda, Soy Lecithin (an emulsifier), Natural Flavor.

**CONTAINS:** Milk, Soy.

# Harkins

## POPCORN

8901 E. McDonald Drive, Scottsdale, AZ 85250

[HARKINS.COM/POPCORN](http://HARKINS.COM/POPCORN)



Nutrition Facts	
About 9 servings per container	
<b>Serving size</b>	<b>30 grams (30g)</b>
<b>Amount per serving</b>	
<b>Calories</b>	<b>154</b>
	<b>% Daily Value*</b>
<b>Total Fat</b> 10g	<b>12%</b>
Saturated Fat 4g	<b>22%</b>
Trans Fat 0g	
<b>Cholesterol</b> 12mg	<b>4%</b>
<b>Sodium</b> 276mg	<b>12%</b>
<b>Total Carbohydrate</b> 14g	<b>5%</b>
Dietary Fiber 2g	<b>6%</b>
Total Sugars 6g	<b>v</b>
Includes 4g Added Sugars	<b>8%</b>
<b>Protein</b> 2g	
Vitamin D 1mcg	3%
Calcium 37mg	3%
Iron 0mg	0%
Potassium 16mg	0%
*The % Daily Value (DV) tells you how much a nutrient in a serving of food contributes to a daily diet. 2,000 calories a day is used for general nutrition advice.	

CONSUMER UNIT UPC



OUTER CASE UPC

